



Features :

- Isolated mounting base 3000V~
- Pressure contact technology with increased power cycling capability
- Space and weight savings

Typical Applications

- AC/DC Motor drives
- Various rectifiers
- DC supply for PWM inverter

V_{RSM}	V_{RRM}	Type & Outline
2100 V	2000 V	MDC250-20-413F3
2300 V	2200 V	MDC250-22-413F3
2600 V	2500 V	MDC250-25-413F3

SYMBOL	CHARACTERISTIC	TEST CONDITIONS	$T_J(^{\circ}C)$	VALUE			UNIT
				Min	Type	Max	
$I_{F(AV)}$	Mean forward current	180° half sine wave 50Hz Single side cooled, $T_C=100^{\circ}C$	150			250	A
$I_{F(RMS)}$	RMS forward current		150			393	A
I_{RRM}	Repetitive peak current	at V_{RRM}	150			20	mA
I_{FSM}	Surge forward current	10ms half sine wave	150			9.5	KA
I^2t	I^2t for fusing coordination	$V_R=0.6V_{RRM}$				451	$A^2s \cdot 10^3$
V_{FO}	Threshold voltage		150			0.85	V
r_F	Forward slop resistance					0.89	mΩ
V_{FM}	Peak forward voltage	$I_{FM}=750A$	25			1.53	V
$R_{th(j-c)}$	Thermal resistance Junction to case	At 180° sine: Single side cooled				0.13	$^{\circ}C/W$
$R_{th(c-h)}$	Thermal resistance case to heatsink	At 180° sine: Single side cooled				0.04	$^{\circ}C/W$
V_{iso}	Isolation voltage	50Hz, R.M.S, $t=1min, I_{iso}:1mA(max)$		3000			V
F_m	Terminal connection torque(M8)				12		N·m
	Mounting torque(M6)				6		N·m
T_{stg}	Stored temperature			-40		125	$^{\circ}C$
W_t	Weight				806		g
Outline	413F3						

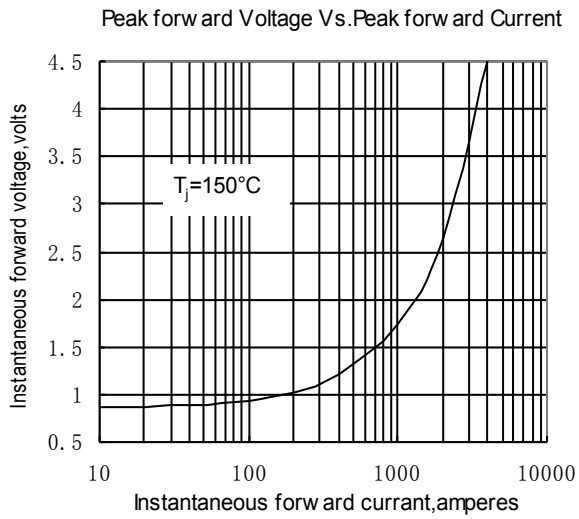


Fig.1

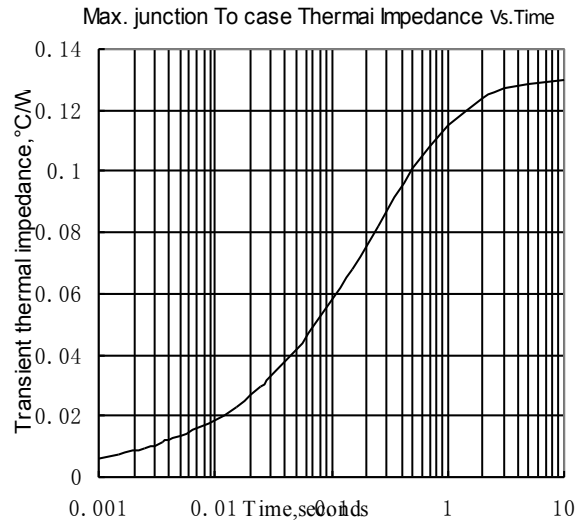


Fig.2

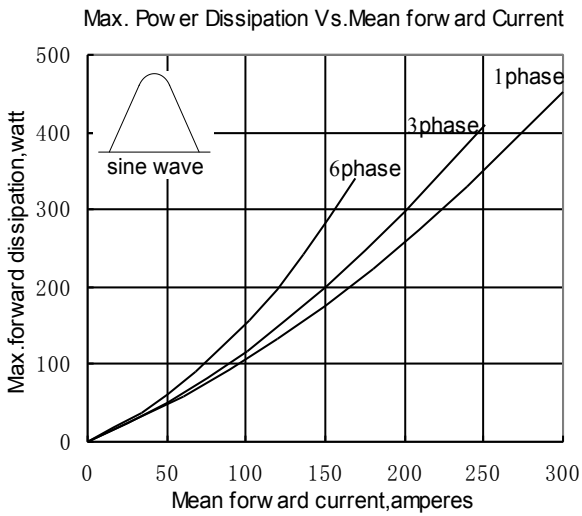


Fig.3

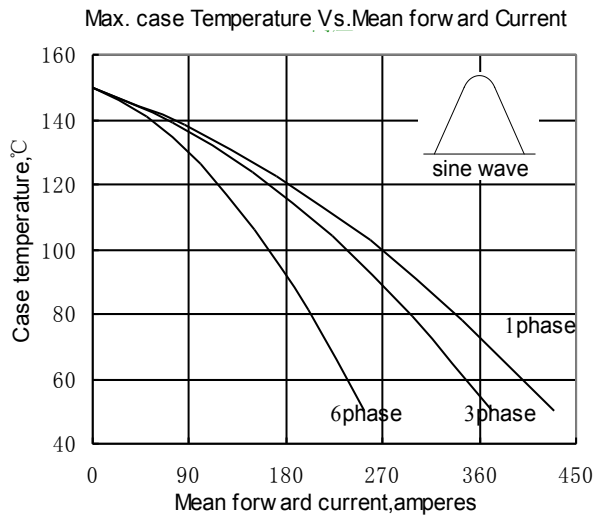


Fig.4

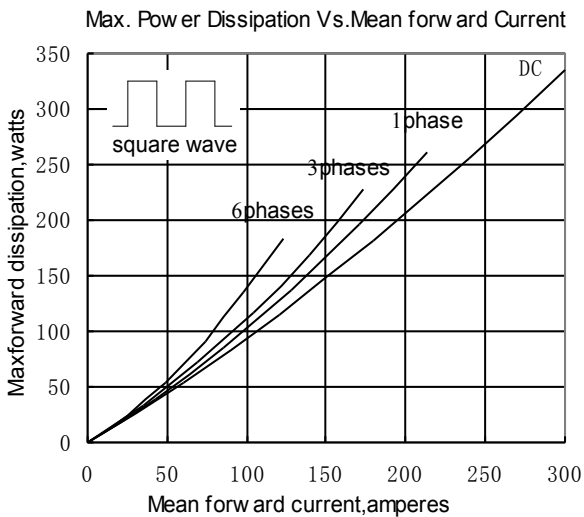


Fig.5

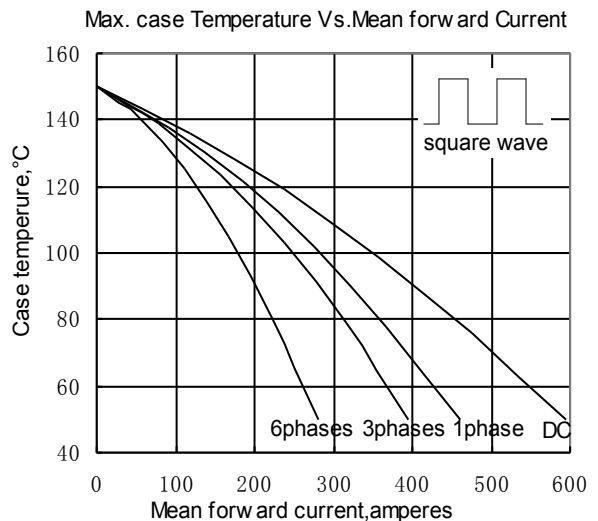


Fig.6

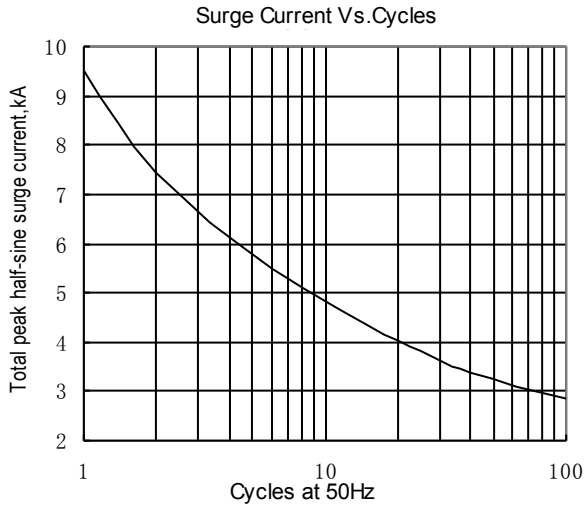


Fig.7

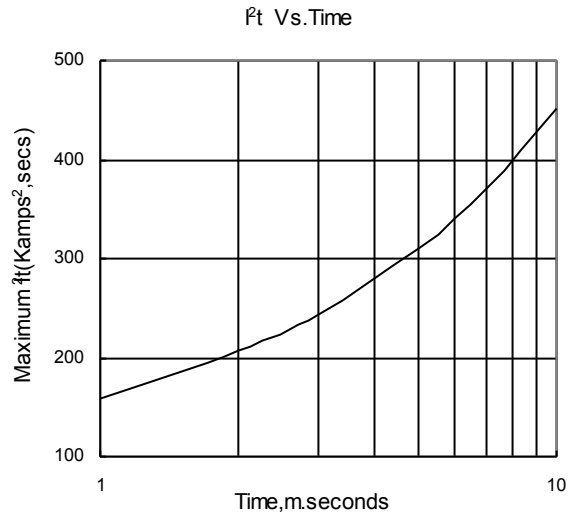
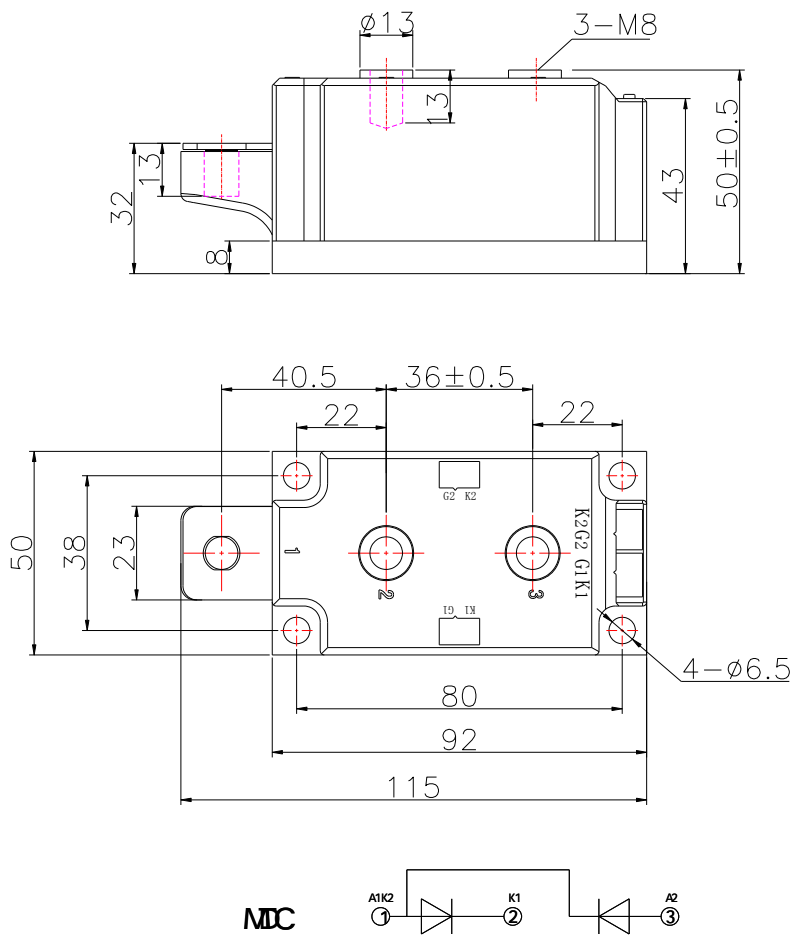


Fig.8

Outline:



413F3